



# DAWN SANDOVAL

*Residential*

2 Bedrooms

Apartment

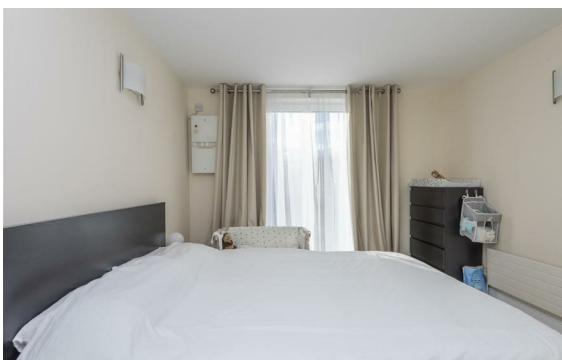
Located in London

£550,000



[info@dawnsandovalresidential.cc](mailto:info@dawnsandovalresidential.cc) [www.dawnsandovalresidential.co.uk](http://www.dawnsandovalresidential.co.uk)

0207 093 1702



Dawn Sandoval Residential are pleased to offer for sale this ground floor 2 bed 2 bath in the ever popular Millennium Harbour.

### Energy Efficiency Rating: C

Agents Note: Whilst every care has been taken to prepare these particulars, they are for guidance purposes only. All measurements are approximate and are for general guidance purposes only and whilst every care has been taken to ensure their accuracy, they should not be relied upon and potential buyers/tenants are advised to recheck the measurements.

**DAWN  
SANDOVAL**  
*Residential*

5 Indescon Square  
Lightermans Road  
London  
E14 9DQ

0207 093 1702

info@dawnsandovalresidential.

www.dawnsandovalresidential.co.uk